



The VCE100 is the smallest Combi truck in the successful BT VNA man-up range. Though small in size, the VCE100 offers high performance and excellent capacity in VNA order picking and pallet handling applications.



email: [info@forstor.com.ua](mailto:info@forstor.com.ua)  
site: [www.forstor.com.ua](http://www.forstor.com.ua)



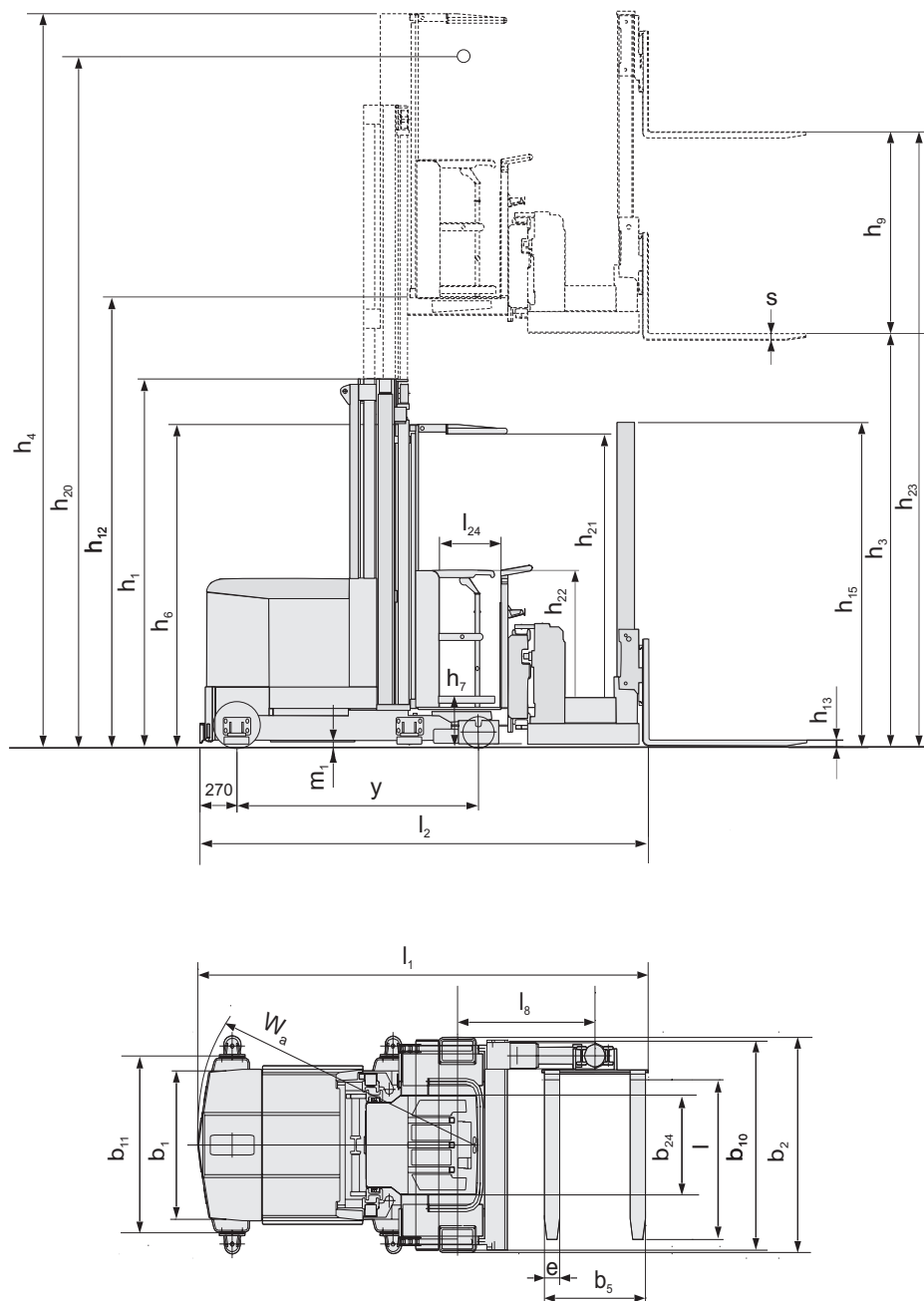
| Technical Details                                 |      | VCE100              |
|---|------|---------------------|
| Power unit  |      | electrical, battery |
| Operating type                                    |      | stand on/ride on    |
| Rated capacity                                    | kg   | 1000                |
| Load centre                                       | mm   | 600                 |
| Weight without battery, min./max.                 | kg   | 2815—3615           |
| Wheel type  |      | Vulkollan           |
| Wheel dimension, fork side                        | mm   | Ø 240 x 140         |
| Wheel dimension, drive wheel side                 | mm   | Ø 343 x 140         |
| Number of wheels, fork side                       |      | 2                   |
| Number of wheels, drive wheel side                |      | 1                   |
| Travel speed, without/with rated load             | km/h | 9.0/8.5             |
| Main lifting speed, without/with rated load       | m/s  | 0.39/0.36           |
| Auxiliary lifting speed, without/with rated load  | m/s  | 0.40/0.30           |
| Main lowering speed, without/with rated load      | m/s  | 0.35/0.40           |
| Auxiliary lowering speed, without/with rated load | m/s  | 0.20/0.40           |
| Drive motor/Intermittent rating (S2 60')          | kW   | 5.2                 |
| Lift motor/Intermittent rating (S3 15%)           | kW   | 13.5                |
| Battery weight, min.                              | kg   | 1085                |
| Battery (5h discharge)                            | V/Ah | 48/700              |
| Battery (5h discharge)                            | kWh  | 33.6                |
| Service brake                                     |      | electric            |
| Parking brake                                     |      | electro-mechanical  |
| Steering system                                   |      | electric, AC        |
| Speed control                                     |      | Variable AC         |

| Dimensions, mm  |                                    | VCE100          |
|-----------------|------------------------------------|-----------------|
| y               | Wheel base                         | 1765            |
| b <sub>10</sub> | Track width fork side c/c          | 1000—1500       |
| b <sub>11</sub> | Track width rear c/c               | 0               |
| h <sub>6</sub>  | Height of cab                      | 2370            |
| h <sub>7</sub>  | Instep height                      | 330             |
| h <sub>9</sub>  | Auxiliary lift movement            | 1600, 1800      |
| h <sub>13</sub> | Height of lowered fork             | 60              |
| h <sub>15</sub> | Height of auxiliary lift mast      | 2370, 2570      |
| h <sub>21</sub> | Height of cab inside               | 2010            |
| h <sub>22</sub> | Height of cab sides                | 900             |
| l <sub>1</sub>  | Total truck length                 | 3474            |
| l <sub>2</sub>  | Truck length incl. fork front face | 3228            |
| l <sub>8</sub>  | Front axle to boom pivot           | 967—1312        |
| l <sub>24</sub> | Entrance width                     | 430             |
| b <sub>1</sub>  | Chassis width, back                | 1070            |
| b <sub>2</sub>  | Chassis width, front               | 1150—1650       |
| b <sub>24</sub> | Cab width                          | 1280-1780       |
| s               | Fork thickness                     | 40              |
| e               | Fork width                         | 100             |
| l               | Fork length                        | 1200 (800—1400) |
| b <sub>5</sub>  | Width across fork                  | 544/620/772     |
| m <sub>1</sub>  | Floor clearance                    | 50              |
| W <sub>a</sub>  | Turning radius                     | 2017            |

Truck performance and dimensions are nominal and subject to tolerances.  
BT Products AB products and specifications are subject to change without notice.  
All data is based on VDI 2198.

| Mast, mm   | VCE100 Duplex Tele |             |             |             |             |             |             |
|--|--------------------|-------------|-------------|-------------|-------------|-------------|-------------|
| <b>h<sub>12</sub> Platform height</b>                | <b>3210</b>        | <b>3710</b> | <b>4210</b> | <b>4710</b> | <b>5210</b> | <b>5710</b> | <b>6210</b> |
| <b>h<sub>3</sub> Lift movement</b>                   | <b>2900</b>        | <b>3400</b> | <b>3900</b> | <b>4400</b> | <b>4900</b> | <b>5400</b> | <b>5900</b> |
| <b>h<sub>20</sub> Picking height</b>                 | <b>4810</b>        | <b>5310</b> | <b>5810</b> | <b>6310</b> | <b>6810</b> | <b>7310</b> | <b>7810</b> |
| <b>Standard Auxiliary</b>                            |                    |             |             |             |             |             |             |
| <b>h<sub>23</sub> Total lift height<sup>1)</sup></b> | <b>4540</b>        | <b>5040</b> | <b>5540</b> | <b>6040</b> | <b>6540</b> | <b>7040</b> | <b>7540</b> |
| <b>h<sub>1</sub> Height of truck, min.</b>           | <b>2450</b>        | <b>2700</b> | <b>2950</b> | <b>3200</b> | <b>3450</b> | <b>3700</b> | <b>3950</b> |
| <b>h<sub>4</sub> Height of truck, max.</b>           | <b>5270</b>        | <b>5770</b> | <b>6270</b> | <b>6770</b> | <b>7270</b> | <b>7770</b> | <b>8270</b> |
| <b>High Auxiliary (Option)</b>                       |                    |             |             |             |             |             |             |
| <b>h<sub>23</sub> Total lift height<sup>1)</sup></b> | <b>4740</b>        | <b>5240</b> | <b>5740</b> | <b>6240</b> | <b>6740</b> | <b>7240</b> | <b>7740</b> |
| <b>h<sub>1</sub> Height of truck, min.</b>           | <b>2570</b>        | <b>2700</b> | <b>2950</b> | <b>3200</b> | <b>3450</b> | <b>3700</b> | <b>3950</b> |
| <b>h<sub>4</sub> Height of truck, max.</b>           | <b>5470</b>        | <b>5970</b> | <b>6470</b> | <b>6970</b> | <b>7470</b> | <b>7970</b> | <b>8470</b> |

1)  $h_{23} = h_3 + h_9 + s$





- The stable chassis and rigid duplex mast allows the VCE100 to lift a 1000 kg load up to 6.0 m and 700 kg up to 7.5 m.
- The spacious cab is designed to encourage peak operator performance by keeping stress and strain to a minimum.
- The advanced hydraulic lift system combined with smooth acceleration and "Optipace" drive speed regulation allows very fast and confident load handling.
- The Can-Bus simplifies the electrical system by reducing wiring and increases the flexibility of the truck control system.
- A compact truck for compact storage that fits into a 1460 mm wide aisle with ease. Can be adapted to fit most common aisle and load sizes as standard.



| Truck features                      | VCE100 |
|-------------------------------------|--------|
| Adjustable width over forks         | S      |
| Elevating platform                  | S      |
| Wire/rail guidance                  | O      |
| Controls and instruments            |        |
| Electronic height indicator         | S      |
| Power/electronic steering           | S      |
| Steering direction indicator        | S      |
| Driving features                    |        |
| Automatic deceleration              | S      |
| Electronic braking system           | S      |
| Electronic speed control            | S      |
| Safety features                     |        |
| Automatic parking brake             | S      |
| BT Optipace system                  | S      |
| Clear view mast                     | S      |
| Electronic support arm brakes       | O      |
| Drivers compartment features        |        |
| Adjustable seat                     | S      |
| Adjustable steering wheel           | S      |
| Low step-in                         | S      |
| Writing table                       | O      |
| Maintenance features                |        |
| Fault diagnosis facility            | S      |
| Battery management features         |        |
| Battery status indicator            | S      |
| Battery discharge prevention system | S      |
| Sideways battery change             | S      |

S = Standard feature

O = Optional feature

— = Not available

ITS, Sweden — 748430-040, 0903



email: [info@forstor.com.ua](mailto:info@forstor.com.ua)

site: [www.forstor.com.ua](http://www.forstor.com.ua)

