



## Product Information

## BT Radioshuttle System

### High Density Storage Systems

Maximum use of warehouse volume, with maintained flexibility and handling capacity — the concept of BT Radioshuttle.

Electrically powered load carriers conveying goods in and out of deep storage “tunnels” within specially designed racks. Each unit has rechargeable batteries, is operated by wireless remote control, and can be quickly and easily transferred between different storage locations by a conventional fork lift truck.

The system provides ultra-high density storage with individual access to each storage tunnel.

- While the BT Radioshuttle transports the load within the racking the truck driver is free to work elsewhere.
- Different types of goods can be stored in different tunnels in the racking system.
- Built-in wheels with large diameter and vulkollan surface. Smooth and silent ride with low surface pressure.
- Easy battery change. The batteries can be charged onboard or outside of the shuttle. Ideal for coldstore and 3-shifts operations.
- Can be handled by all types of fork lift trucks.
- Several Radioshuttles can be handled from one radiotransmitter.
- One set of batteries, one battery charger, one radio transmitter and an aerial with truck cassette (max. 24 V) are included in the delivery.
- Combi version for handling two different pallet sizes.
- Cold store version down to -30 °C.
- Ability to handle the pallets FiFo, with or without reorganization of the pallets, or FiLo.

### Options

- Radioshuttles for different pallet sizes.
- Many possibilities to organize the racks, e.g. order picking tunnel in combination with gravity flow, mezzanine construction and truck- or emergency aisle.



| Technical Details                         |            | RS 10                 | RS 15                 |
|---|------------|-----------------------|-----------------------|
| Power unit                                |            | electrical, battery   | electrical, battery   |
| Operating type                            |            | shuttle               | shuttle               |
| Rated capacity                            | kg         | 1000                  | 1500                  |
| Travel speed, without/<br>with rated load | m/s<br>m/s | 0.95/<br>0.65         | 0.65/<br>0.65         |
| Drive motor                               | kW/rpm     | 0.16/182              | 0.16/182              |
| Lift motor                                | kW/rpm     | 0.16/27,5             | 0.16/27,5             |
| Battery                                   |            |                       |                       |
| Battery, type                             |            | gel-acid lead battery | gel-acid lead battery |
| Battery capacity                          | V/Ah       | 24/50                 | 24/50                 |
| Charging time                             | h          | <8                    | <8                    |
| Battery weight                            | kg         | 2 x 24                | 2 x 24                |
| Battery charger                           |            |                       |                       |
| Charging rate                             | V/A        | 24/15                 | 24/15                 |
| Power supply                              | V/A        | 230/10                | 230/10                |
| Remote control                            |            |                       |                       |
| Type                                      |            | radiotransmitter      | radiotransmitter      |
| Frequency                                 | MHz        | 433                   | 433                   |
| Power supply                              | V/mA       | 12—24 DC/100          | 12 —24 DC/100         |

| Dimensions, mm |                     | RS 10 | RS 15 |
|----------------|---------------------|-------|-------|
| $h_3$          | Lift height         | 21    | 21    |
| $h_6$          | Chassis, height     | 213   | 213   |
| $h_{11}$       | Lift height, pallet | 10    | 10    |
| $e$            | Fork width          | 135   | 135   |
| $b_1$          | Chassis, width      | 1024  | 1024  |
| $b_5$          | Width across fork   | 988   | 988   |
| $b_{20}$       | <b>TSG</b>          | 450   | 450   |

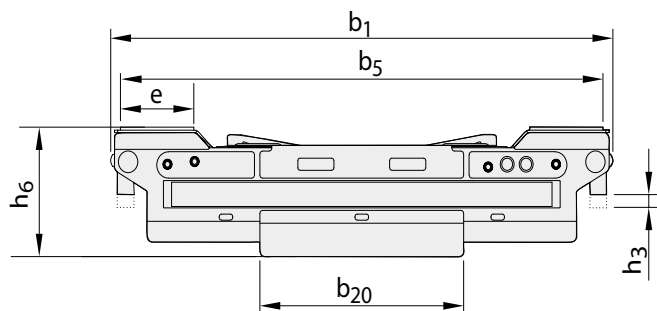
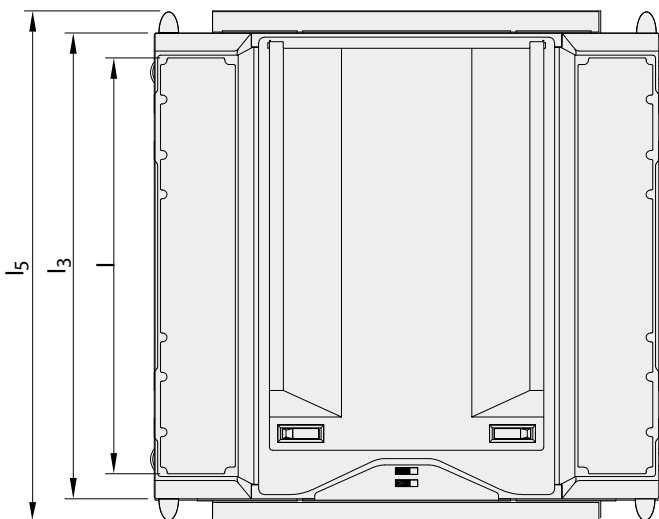
| Dimension — depending on pallet size |                               | RS 10 / RS 15 |            |             |                 |
|--------------------------------------|-------------------------------|---------------|------------|-------------|-----------------|
|                                      | Pallet size                   | mm            | 1200 x 800 | 1200 x 1000 | 1200 x 1000/800 |
| $l_3$                                | Chassis, length               | mm            | 840        | 1040        | 1040            |
| $l$                                  | Fork length                   | mm            | 750        | 950         | 950             |
| $l_5$                                | Chassis, length, incl bumpers | mm            | 920        | 1120        | 1120            |
|                                      | Weight without battery        | kg            | 168        | 180         | 180             |

Truck performance and dimensions are nominal and subject to tolerances.  
BT Products AB products and specifications are subject to change without notice.

**TOYOTA**

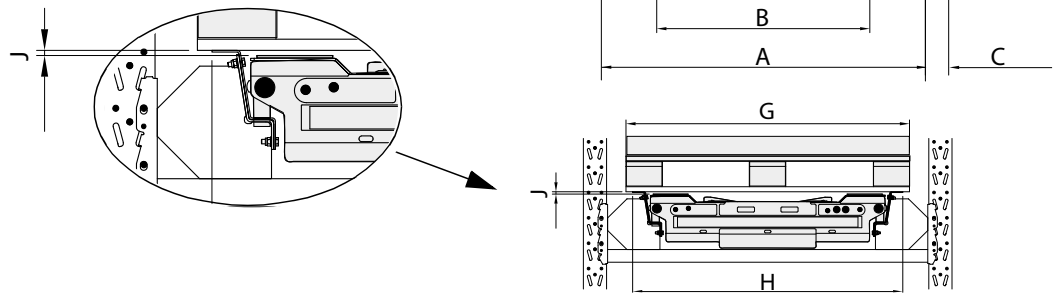
MATERIAL HANDLING

stronger together



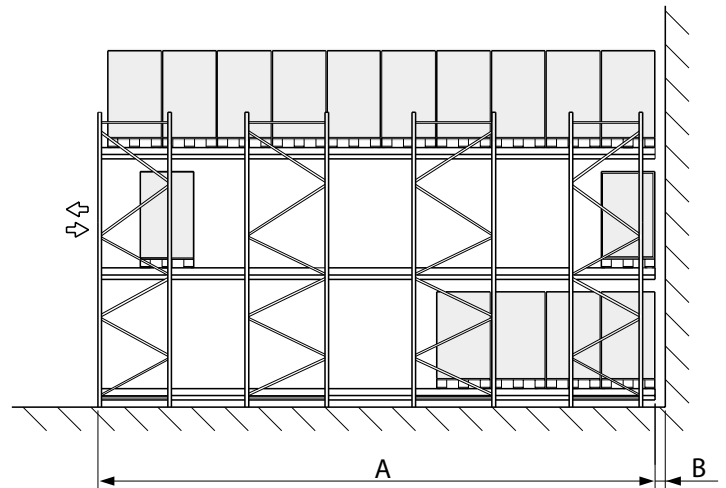
## Frontview levels racking system

- A Section dimension:  
RC 1208, 1210, 1210C 1350mm  
(other dimensions possible)
- B Free dimension between rails:  
RC 1208, 1210, 1210C 922mm
- C Upright width 90mm or 110mm
- D Lowest level above floor 290mm
- E Pallet height
- F Minimum distance between the pallets = 300mm
- G Pallet width = 1200mm
- H Width over rail = 1148mm
- J Clearance = 9mm



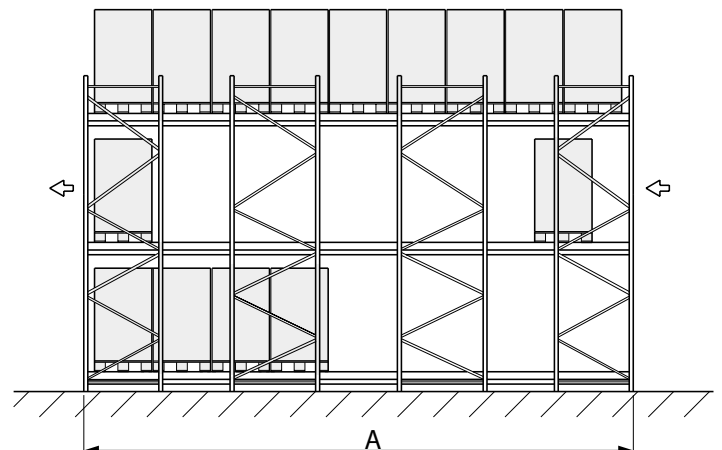
## Sideview — depth of channel FiLo (first in, last out)

- A Depth of channel 300mm +  
(n x (pallet depth + 20mm))
- B Free space behind racking 150mm /



## Sideview — depth of channel FiFo (first in, first out)

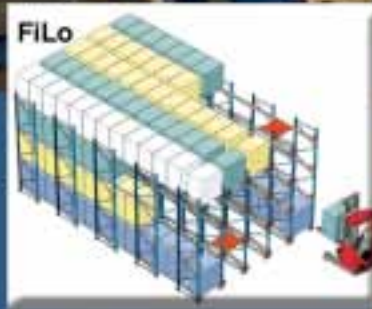
- A Depth of channel 300mm +  
(n x (pallet depth + 20mm)) + 300mm



**TOYOTA**

MATERIAL HANDLING

stronger together



email: [info@forstor.com.ua](mailto:info@forstor.com.ua)  
site: [www.forstor.com.ua](http://www.forstor.com.ua)

**TOYOTA**

MATERIAL HANDLING  
stronger together