

Каталог самоходных электротележек ВТ



е-маил: info@forstor.com.ua
сайт: www.forstor.com.ua

TOYOTA

MATERIAL HANDLING

stronger together

Pedestrian lowlifter truck 1.3 ton

BT minimover



email: info@forstor.com.ua

site: www.forstor.com.ua

TOYOTA

MATERIAL HANDLING

stronger together

Pedestrian lowlifter

Specification for lowlifter trucks					LWE 130
Identification	1.1	Manufacturer			BT
	1.2	Model			LWE 130
	1.3	Drive			Electric
	1.4	Operator type			Pedestrian
	1.5	Load capacity/rated load	Q	kg	1300
	1.6	Load centre	c	mm	600
	1.8	Load distance, centre of support arm wheel to face of forks	x	mm	937
	1.9	Wheelbase	y	mm	1199
	Weight	2.1	Service weight including battery		kg
2.2		Axle load, with load, drive/castor/fork wheel		kg	570/60/992
2.3		Axle load, without load, drive/castor/fork wheel		kg	175/48/36
Wheels	3.1	Drive/castor/fork wheel			Tractothan/PU/PU
	3.2	Wheel size, front		mm	Ø250x60
	3.3	Wheel size, rear		mm	Ø85
	3.4	Additional wheels (dimensions)		mm	Ø100x40
	3.5	Wheels, number front/rear (x=driven wheels)			2-1x/2
	3.6	Track width, front	b ₁₀	mm	480
	3.7	Track width, rear	b ₁₁	mm	364
Dimensions	4.4	Lift	h ₃	mm	120
		Lift height	h ₂₃	mm	205
	4.9	Height of tiller in drive position, min./max.	h ₁₄	mm	788/1270
	4.15	Height, fork lowered	h ₁₃	mm	85
	4.19	Overall length	l ₁	mm	1570
	4.20	Length to face of forks	l ₂	mm	420
	4.21	Overall width	b ₁	mm	700
	4.22	Fork dimensions	s/e/l	mm	76/156/1150
	4.25	Width over forks	b ₅	mm	520
	4.32	Ground clearance, centre of wheelbase	m ₂	mm	34
	4.33	Aisle width for pallets 1000x1200 crossways	A _{st}	mm	1673
4.34	Aisle width for pallets 800x1200 lengthways	A _{st}	mm	1873	
4.35	Turning radius	W _a	mm	1410	
Performance data	5.1	Travel speed, with/without load		km/h	4/5,5
	5.2	Lift speed, with/without load		m/s	0,04/0,07
	5.3	Lowering speed, with/without load		m/s	0,04/0,04
	5.8	Max. gradeability, with/without load		%	5/10 ¹⁾
	5.10	Service brake			Electromagnetic
Electric motor	6.1	Drive motor rating S2 60 min		kW	0,5
	6.2	Lift motor rating at S3 15%		kW	1,2 ²⁾
	6.4	Battery voltage/nominal capacity K _s		V/Ah	2x12/63
	6.5	Battery weight		kg	2x23
	Others	8.1	Type of drive control		
8.4		Sound level at the driver's ear according to EN 12 053		dB(A)	66

1) Measured according to company standard

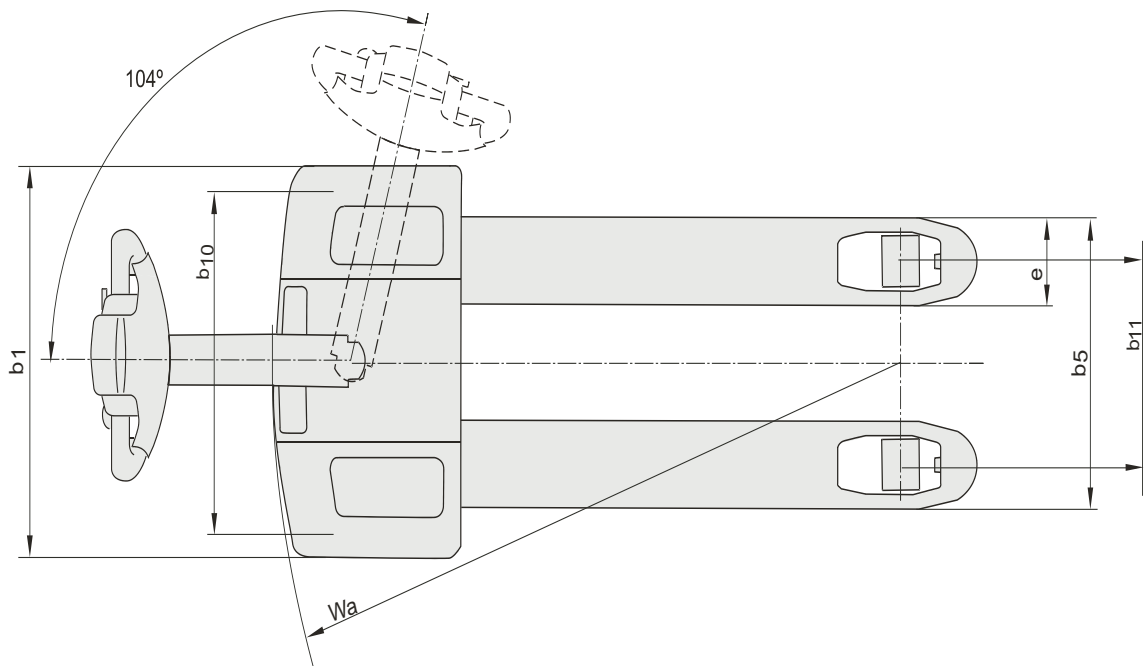
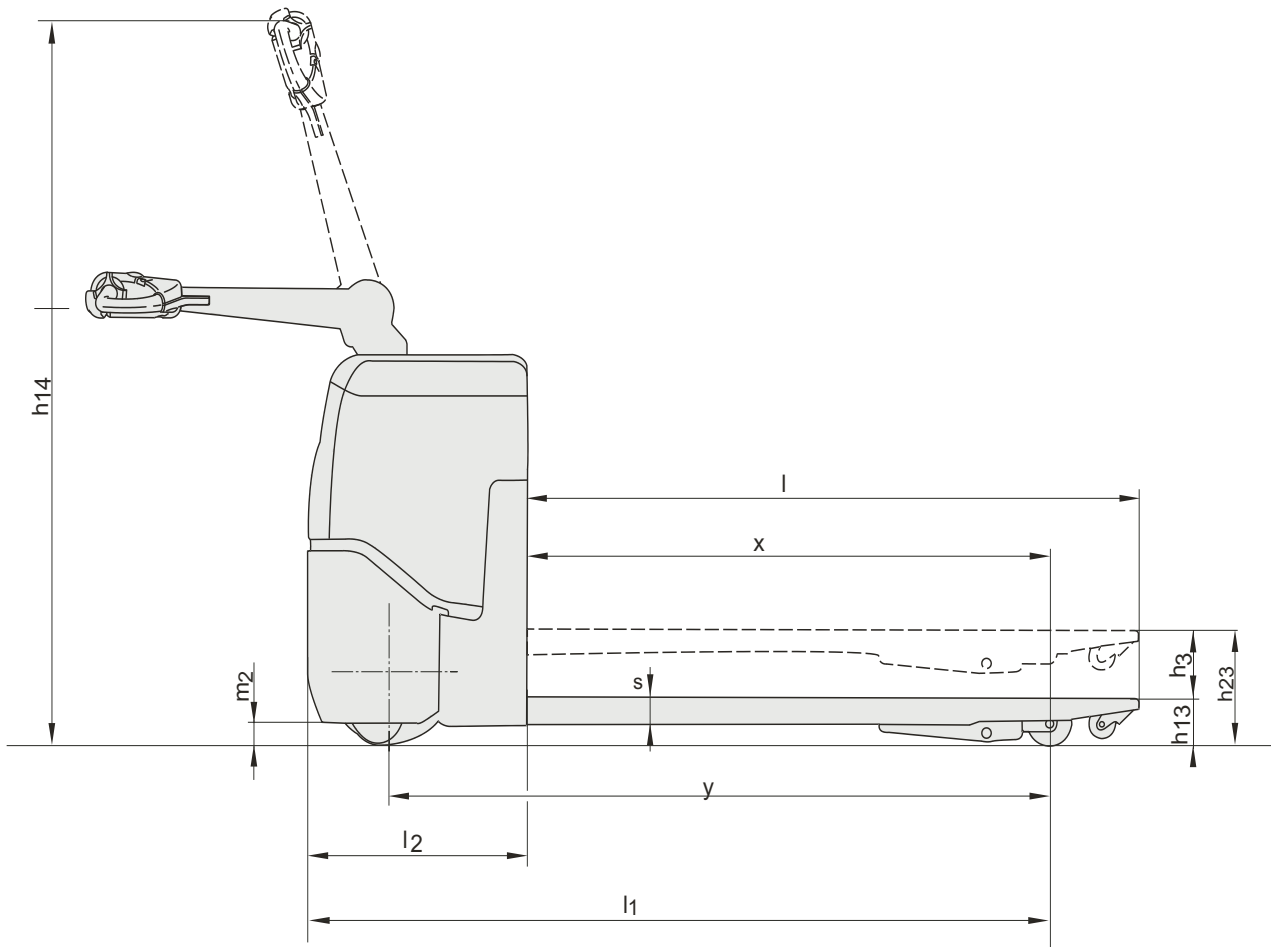
2) S3 4.5%

Truck performance and dimensions are nominal and subject to tolerances.

BT Products AB products and specifications are subject to change without notice.

Dimensional drawings

BT Minimover



Pedestrian lowlifter truck 1.4 - 1.6 ton

BT levio

LWE140

LWE160



 **FORSTOR**

email: info@forstor.com.ua

site: www.forstor.com.ua

TOYOTA

MATERIAL HANDLING

stronger together

Pedestrian lowlifter truck

Specification for lowlifter trucks					LWE140	LWE160	
Identification	1.1	Manufacturer			BT	BT	
	1.2	Model			LWE140	LWE160	
	1.3	Drive			Electric	Electric	
	1.4	Operator type			Pedestrian	Pedestrian	
	1.5	Load capacity/rated load	Q	kg	1400	1600	
	1.6	Load centre	c	mm	600	600	
	1.8	Load distance, centre of support arm wheel to face of forks	x	mm	928	928	
	1.9	Wheelbase	y	mm	1260	1317	
	Weight	2.1	Service weight including battery		kg	458	524
2.2		Axle load, with load, drive/castor/fork wheel		kg	590/150/1115	695/150/1275	
2.3		Axle load, without load, drive/castor/fork wheel		kg	200/150/105	255/150/115	
Wheels	3.1	Drive/castor/fork wheel			Topthane/Topthane/PUR *)	Topthane/Topthane/PUR *)	
	3.2	Wheel size, front		mm	Ø230x70	Ø230x70	
	3.3	Wheel size, rear		mm	Ø85x100	Ø85x100	
	3.4	Additional wheels (dimensions)		mm	Ø125x50	Ø125x50	
	3.5	Wheels, number front/rear (x=driven wheels)			1x+2/2	1x+2/2	
	3.6	Track width, front	b ₁₀	mm	430	430	
	3.7	Track width, rear	b ₁₁	mm	394	394	
Dimensions	4.4	Lift		h ₃	mm	120	120
		Lift height		h ₂₃	mm	205	205
	4.9	Height of tiller in drive position, min./max.		h ₁₄	mm	865/1235	865/1235
	4.15	Height, fork lowered		h ₁₃	mm	85	85
	4.19	Overall length		l ₁	mm	1631	1688
	4.20	Length to face of forks		l ₂	mm	481	538
	4.21	Overall width		b ₁	mm	726	726
	4.22	Fork dimensions		s/e/l	mm	76/156/1150 *)	76/156/1150 *)
	4.25	Width over forks		b ₅	mm	550 *)	550 *)
	4.32	Ground clearance, centre of wheelbase		m ₂	mm	21	21
	4.33	Aisle width for pallets 1000x1200 crossways		A _{st}	mm	1842	1899
4.34	Aisle width for pallets 800x1200 lengthways		A _{st}	mm	1892	1949	
4.35	Turning radius		W _a	mm	1420	1477	
Performance data	5.1	Travel speed, with/without load		km/h	6/6	6/6	
	5.2	Lift speed, with/without load		m/s	0.04/0.05	0.04/0.05	
	5.3	Lowering speed, with/without load		m/s	0.09/0.08	0.09/0.08	
	5.8	Max. gradeability, with/without load		%	8/18 ¹⁾	8/18 ¹⁾	
	5.10	Service brake			Electromagnetic	Electromagnetic	
Electric motor	6.1	Drive motor rating S2 60 min		kW	1.0	1.0	
	6.2	Lift motor rating at S3 15%		kW	1.0 ²⁾	1.0 ²⁾	
	6.4	Battery voltage/nominal capacity K ₅		V/Ah	24/150	24/225 *)	
	6.5	Battery weight		kg	158	214 *)	
Others	8.1	Type of drive control			BT Powerdrive	BT Powerdrive	

¹⁾ Measured according to company standard

²⁾ S3 10%

*) Further alternatives are available and will produce other values.

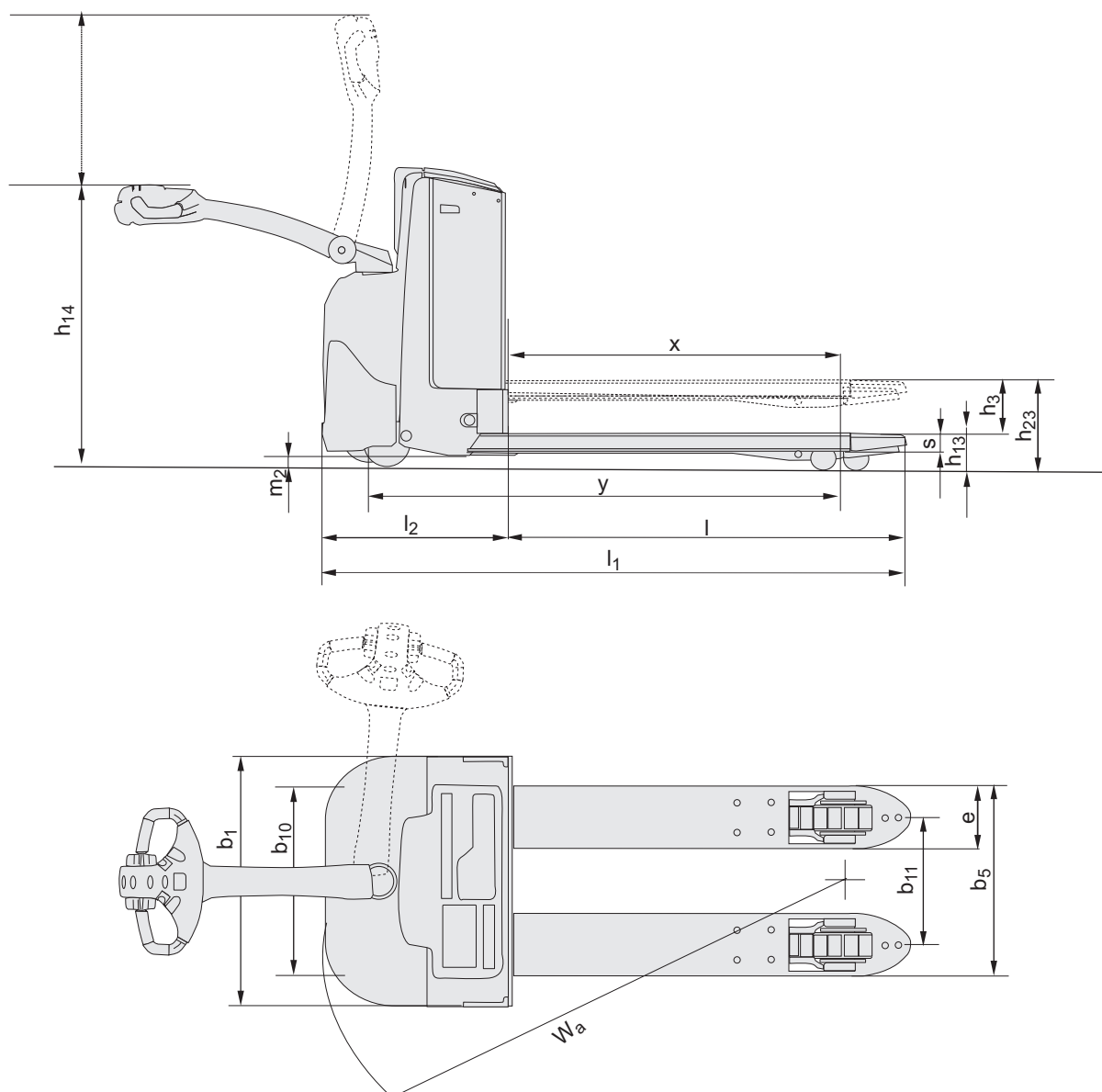
Data is based on standard configurations: Small battery compartment (LWE140) and Medium battery compartment (LWE160).

Truck performance and dimensions are nominal and subject to tolerances.
BT Products AB products and specifications are subject to change without notice.

Battery dependent dimensions

BT levio

Dimensions		Battery Compartment		LWE140	LWE160	
				Small	Small	Medium
1.9	Wheelbase	y	mm	1260	1260	1317
4.19	Overall length	l_1	mm	1631	1631	1688
4.20	Length to face of forks	l_2	mm	481	481	538
4.33	Aisle width for pallets 1000x1200 crossways	A_{st}	mm	1842	1842	1899
4.34	Aisle width for pallets 800x1200 lengthways	A_{st}	mm	1892	1892	1949
4.35	Turning radius	W_a	mm	1420	1420	1477
6.4	Battery voltage, nominal capacity K_5		V/Ah	24/150	24/150	24/225
6.5	Battery weight, min.—max.		kg	120—165	120—165	180—220



Pedestrian lowlifter truck 1.8 - 2.5 ton

BT levio

LWE180

LWE200

LWE250



email: info@forstor.com.ua

site: www.forstor.com.ua

TOYOTA

MATERIAL HANDLING

stronger together

Pedestrian lowlifter

Specification for lowlifter trucks						LWE180	LWE200	LWE250
Identification	1.1	Manufacturer				BT	BT	BT
	1.2	Model				LWE180	LWE200	LWE250
	1.3	Drive				Electric	Electric	Electric
	1.4	Operator type				Pedestrian	Pedestrian	Pedestrian
	1.5	Load capacity/rated load	Q	kg		1800	2000	2500
	1.6	Load centre	c	mm		600	600	600
	1.8	Load distance, centre of support arm wheel to face of forks	x	mm		898	898	898
	1.9	Wheelbase	y	mm		1287	1287	1287
	Weight	2.1	Service weight including battery		kg		554	554
2.2		Axle load, with load, drive/castor/fork wheel		kg		760/150/1435	815/150/1580	950/150/1945
2.3		Axle load, without load, drive/castor/fork wheel		kg		260/150/135	260/150/135	260/150/135
Wheels	3.1	Drive/castor/fork wheel				Tophane/Topthane/PUR *)		Vulkollan/Topthane/Vulkollan *)
	3.2	Wheel size, front		mm		Ø230x70	Ø230x70	Ø230x70
	3.3	Wheel size, rear		mm		Ø85x75	Ø85x75	Ø85x75
	3.4	Additional wheels (dimensions)		mm		Ø125x50	Ø125x50	Ø125x50
	3.5	Wheels, number front/rear (x=driven wheels)				1x+2/4	1x+2/4	1x+2/4
	3.6	Track width, front	b ₁₀	mm		430	430	430
	3.7	Track width, rear	b ₁₁	mm		370	370	370
Dimensions	4.4	Lift	h ₃	mm		120	120	120
		Lift height	h ₂₃	mm		205	205	205
	4.8	Stand height (optional platform)	h ₇	mm		—	150	—
	4.9	Height of tiller in drive position, min./max.	h ₁₄	mm		865/1235	865/1235	865/1235
	4.15	Height, fork lowered	h ₁₃	mm		85	85	85
	4.19	Overall length	l ₁	mm		1688	1688	1688
	4.20	Length to face of forks	l ₂	mm		538	538	538
	4.21	Overall width	b ₁	mm		726	726	726
	4.22	Fork dimensions	s/e/l	mm		78/180/1150 *)	78/180/1150 *)	78/180/1150 *)
	4.25	Width over forks	b ₅	mm		550 *)	550 *)	550 *)
	4.32	Ground clearance, centre of wheelbase	m ₂	mm		21	21	21
	4.33	Aisle width for pallets 1000x1200 crossways	A _{st}	mm		1899	1899	1899
4.34	Aisle width for pallets 800x1200 lengthways	A _{st}	mm		1949	1949	1949	
4.35	Turning radius	W _a	mm		1447	1447	1447	
Performance data	5.1	Travel speed, with/without load		km/h		6/6	6/6	6/6
	5.2	Lift speed, with/without load		m/s		0.04/0.05	0.06/0.09	0.05/0.09
	5.3	Lowering speed, with/without load		m/s		0.09/0.08	0.09/0.08	0.09/0.08
	5.8	Max. gradeability, with/without load ²⁾		%		9/18 ¹⁾	9/18 ¹⁾	8/18 ¹⁾
	5.10	Service brake				Electromagnetic	Electromagnetic	Electromagnetic
Electric motor	6.1	Drive motor rating S2 60 min		kW		1.0	1.5	1.5
	6.2	Lift motor rating at S3 15%		kW		1.0 ²⁾	1.4 ²⁾	1.4 ²⁾
	6.4	Battery voltage/nominal capacity K _s		V/Ah		24/225 *)	24/225 *)	24/225 *)
	6.5	Battery weight		kg		214 *)	214 *)	214 *)
Others	8.1	Type of drive control				BT Powerdrive	BT Powerdrive	BT Powerdrive

¹⁾ Measured according to company standard

²⁾ S3 10%

*) Further alternatives are available and will produce other values.

Data is based on standard configurations: Medium battery compartment.

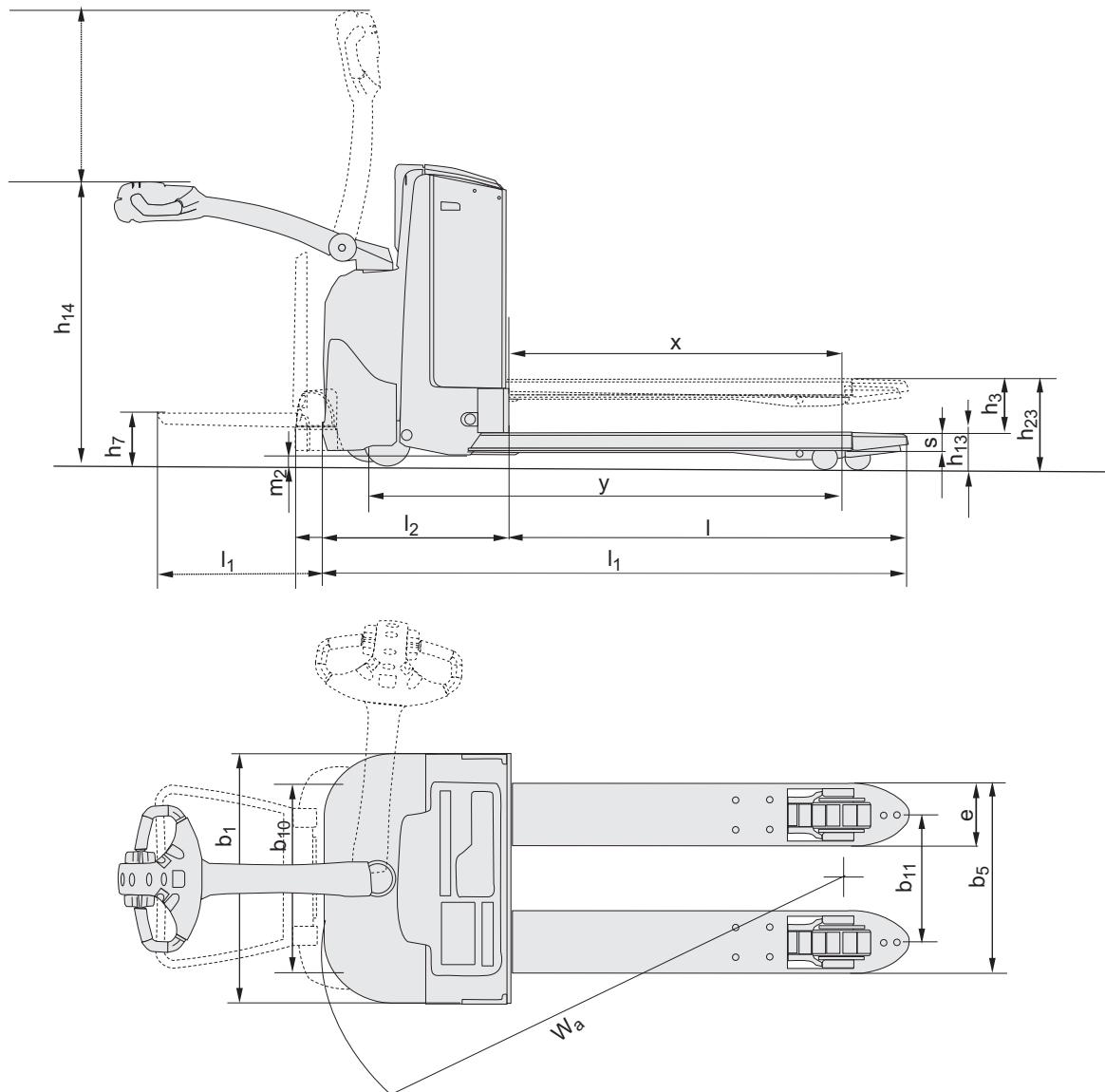
Truck performance and dimensions are nominal and subject to tolerances.

BT Products AB products and specifications are subject to change without notice.

Battery dependent dimensions

BT levio

Dimensions		Battery change		LWE180		LWE200			LWE250		
				Lift out		Lift out		Sideways	Lift out		Sideways
		Battery Compartment	Medium	Large	Medium	Large	Large	Medium	Large	Large	
1.9	Wheelbase	y	mm	1287	1337	1287	1337	1337	1287	1337	1337
4.19	Overall length without platform with platform up/down	l_1	mm	1688	1738	1688	1738	1738	1688	1738	1738
				—	—	1773/2163	1823/2213	1823/2213	—	—	—
4.20	Length to face of forks without platform with platform up/down	l_2	mm	538	588	538	588	588	538	588	588
				—	—	623/1013	673/1063	673/1063	—	—	—
4.33	Aisle width for pallets 1000x1200 crossways without platform with platform up/down	A_{st}	mm	1899	1948	1899	1948	1948	1899	1948	1948
				—	—	1984/2384	2033/2433	2033/2433	—	—	—
4.34	Aisle width for pallets 800x1200 lengthways without platform with platform up/down	A_{st}	mm	1949	1998	1949	1998	1998	1949	1998	1998
				—	—	2034/2434	2083/2483	2083/2483	—	—	—
4.35	Turning radius without platform with platform up/down	W_a	mm	1447	1496	1447	1496	1496	1447	1496	1496
				—	—	1532/1932	1581/1981	1581/1981	—	—	—
6.4	Battery voltage, nominal capacity K_s		V/Ah	24/225	24/300	24/225	24/300	24/260	24/225	24/300	24/260
6.5	Battery weight, min.—max.		kg	180—220	220—270	180—220	220—270	220—230	180—220	220—270	220—230



LPE200

LPE240



The LPE trucks within the Orion Range are ideally suited for high performance applications regarding dock loading / cross-docking / horizontal transportation. Excellent man-machine interface combined with the LPE trucks dynamic characteristics provides a base for high productivity.



email: info@forstor.com.ua

site: www.forstor.com.ua

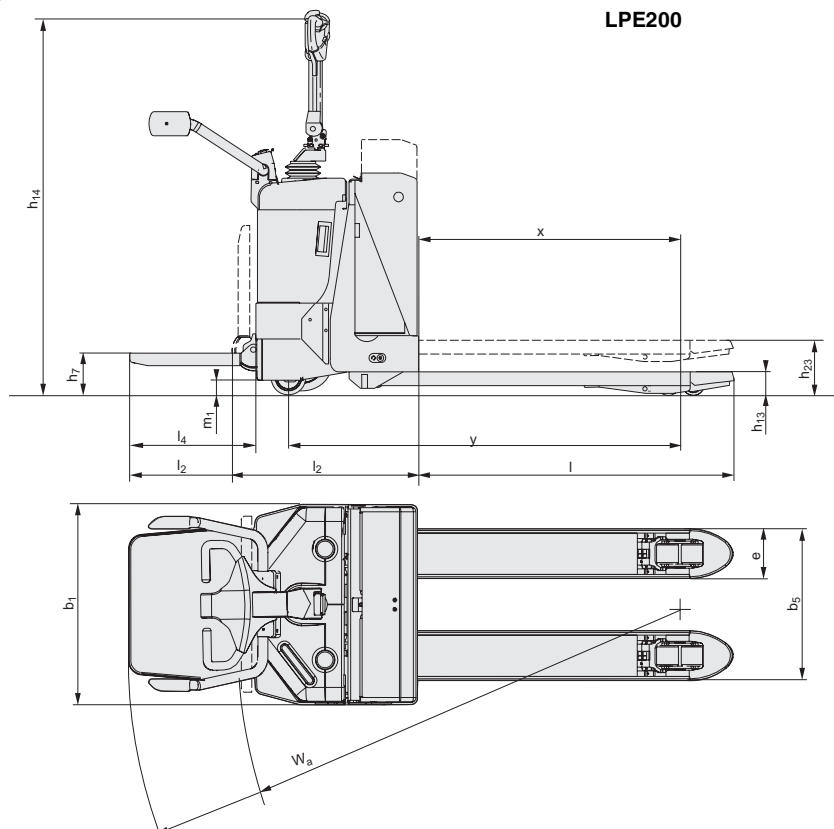


Technical Details		LPE200, 6 km/h	LPE200, High performance	LPE240
Rated capacity	kg	2000	2000	2400
Load centre	mm	600	600	600
Weight without battery	kg	405	420	730
Max. axle load drive wheel, without/with rated load	kg	350/550	350/550	510/835
Max. axle load castor wheels, without/with rated load	kg	60+60/205+205	70+70/215+215	150+150/295+295
Max. axle load fork wheels, without/with rated load	kg	65+65/820+820	65+65/820+820	105+105/1075+1075
Castor wheels, polyurethane	mm	Ø 125x50	Ø 125x50	Ø 150x50
Fork wheels, single or bogie, Vulkollan	mm	Ø 85	Ø 85	Ø 85x75 ¹⁾
Drive wheel, Vulkollan ²⁾	mm	Ø 215x70	Ø 215x70	Ø 250x75, 250x105
Travel speed, without/with 1000kg/with rated load	km/h	6.0/—/6.0	8.5/—/7.5	12.0/12.0/8.0 ³⁾
Lift speed fork, without/with rated load	m/s	0.07/0.05	0.07/0.05	0.06/0.04
Lowering speed fork, without/with rated load	m/s	0.09/0.08	0.09/0.08	0.04/0.04
Gradient, without/with rated load	%	18/8	18/8	15/8
Service-/parking brake		electric	electric	electric
Drive motor/Intermittent rating	kW/%	1.2/60	1.7/60	2.5/60
Lift motor/Intermittent rating	kW/%	2.2/10	2.2/10	2.2/10
Steering system		steering arm	steering arm	steering arm
Speed control, number of steps		stepless	stepless	stepless
Steering arc	°	200	200	180

Dimensions, mm		LPE200	LPE240
h ₂₃	Total lift height	205	210 ⁴⁾
x	Front axle to fork front face, fork raised	892	909 ⁴⁾
h ₂₃	Total lift height	—	225 ⁵⁾
x	Front axle to fork front face, fork raised	—	886 ⁵⁾
h ₇	Platform height	150	184
h ₁₄	Height of handle in neutral pos.	1370	1450
h ₁₃	Height of lowered fork	85	85
e	Fork width	180	180
l	Fork length	800/1000/1150/1200/1450/1550/1950/ 2150/2350	800/950/1000/1150/1200/1450/1550/ 1950/2000/2150/2350
b ₅	Width across fork	450/520/536/550/570/685	450/520/536/550/685
l ₄	Platform length	458	422
m ₁	Floor clearance	30	55

- 1) Single wheels upto and including l=1450 mm
- 2) Other alternatives available
- 3) With rated load, small battery compartment: Travel speed = 8.5 km/h
- 4) Pallet handling
- 5) Roll cage handling

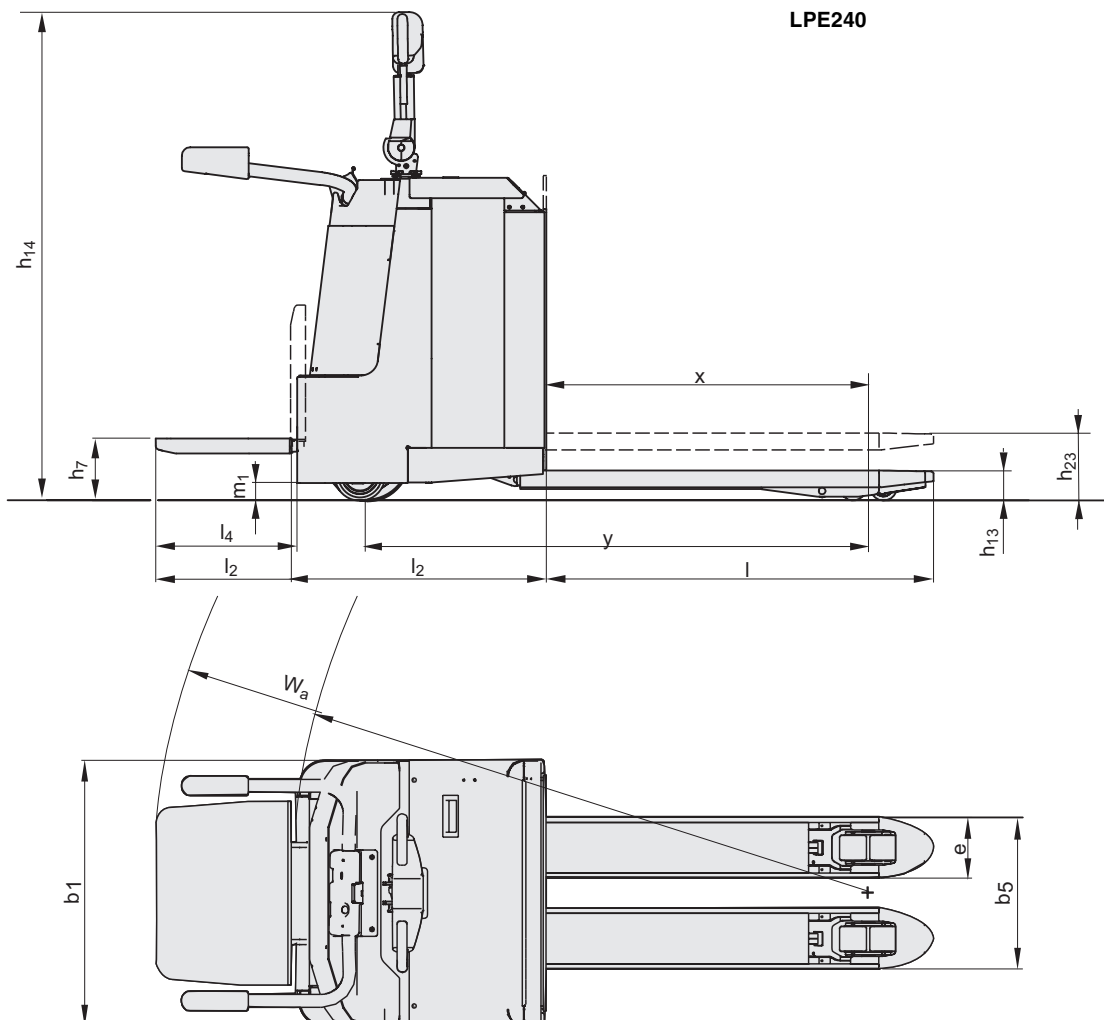
Data is based on standard battery compartment, medium size, l=1150 mm



Dimensions — standard battery compartment			LPE200		LPE240	
			Battery compartment		Battery compartment	
			Medium	Large	Small	Medium
y	Wheel base, fork raised/lowered	mm	1313/1377	1361/1425	1605/1725	1691/1811
l_2	Truck length incl. back of fork, platform up/down	mm	677/1051	725/1099	745/1167	831/1253
b_1	Chassis, width	mm	726	726	790	790
A_{st}	Aisle width, min., platform up/down Pallet 800x1200 mm	mm	2013/2387	2061/2435	2265/2687	2351/2773
W_a	Turning radius, platform up/down	mm	1569/1943	1617/1991	1725/2147	1811/2233
	Battery capacity, min./max.	Ah	180/240	280/320	300/465	300/620
	Voltage	V	24	24	24	24
	Battery weight, min./max.	kg	150/210	200/250	250/380	250/380

Dimensions — sideway exchange battery compartment			LPE200		
			Battery compartment		
			Medium	Large	DIN
y	Wheel base, fork raised/lowered	mm	1345/1409	1395/1459	1445/1509
l_2	Truck length incl. back of fork, platform up/down	mm	709/1083	759/1133	809/1183
b_1	Chassis, width	mm	755	755	755
A_{st}	Aisle width, min., platform up/down Pallet 800x1200 mm	mm	2109/2483	2159/2533	2209/2583
W_a	Turning radius, platform up/down	mm	1665/2039	1715/2089	1765/2139
	Battery capacity, min./max.	Ah	210/240	280/320	240/330
	Voltage	V	24	24	24
	Battery weight, min./max.	kg	150/210	220/250	210/300

Truck performance and dimensions are nominal and subject to tolerances.
 BT Products AB products and specifications are subject to change without notice.
 All data is based on VDI 2198.





- The truck is equipped with Powertrak drive unit configuration — a BT patent. The drive wheel pressure is constantly adjusted due to the weight of the load. The result is optimal traction and minimum steering force.
- Integrated spring loaded, foldable platform together with stable and comfortable gates provides safe high speed operation and maximum efficiency.
- The comfortable steering arm, with its modern design, facilitates one hand operation. The lift, lowering and driving functions are ergonomically placed on the steering arm and can be operated by finger tip force.
- The BT Powerdrive system provides smooth and effortless driving, quick reliable information and easy programmable performance of the truck – to suit the driver and application.
- Individual driver parameters, top speed, acceleration and automatic speed reduction, to meet driver skills can be programmed via the key pad (no tool needed).

Truck features	LPE200	LPE240
BT Powerdrive System	S	S
Climber wheels	O	O
Powertrak traction system	S	S
Controls and instrument		
Fingertip controls	S	S
Information display	S	S
Driving features		
Electronic braking system	S	S
Electronic regenerative brakes	S	S
Electronic speed control	S	S
Safety features		
Automatic parking brake	S	S
Driver detection system	S	S
Fixed sideguards	O	O
Folding sideguards	O	S
Load support	O	O
Drivers compartment features		
Writing table	O	O
Maintenance features		
Easy access for maintenance	S	S
Fault diagnosis facility	S	S
Historic fault log	S	S
Lubrication points	S	S
Battery management features		
Battery change facility	O	O
Battery status indicator	S	S
Built-in charger	O	—
Heavy duty battery compartments	—	S
Sideways battery change	O	O

S = Standard feature

O = Optional feature

— = Not available



email: info@forstor.com.ua
 site: www.forstor.com.ua





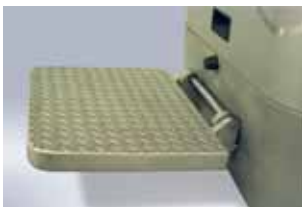
Pedestrian Pallet Truck

Stainless steel — with platform

The ORION Range with modern styling is ideally suited for high performance applications. The LPE200I is especially designed for use in food processing or pharmaceutical industry with its high demands in corrosive production environment and standards of hygiene. The truck material is AISI304 (W. No. 1.4301 or SS2333) with all outside surfaces glass blasted.



- The **comfortable steering arm**, with its modern design, facilitates one hand operation — either left or right hand. The display on the handle gives useful information.
- Choice of having **PIN Code** (up to 10) instead of key. Provides access control. Each code can store individual parameters to meet the driver's skill / environment.
- The **BT POWERDRIVE system**. The unique integration of contactless controls, CAN-Bus communication and a separately excited drivemotor gives many advantages. The contactless controls give smooth and effortless driving. The CAN-Bus communication provides quick, reliable transmission and only a few communication cables are needed. The separately excited drivemotor allows easy programming of its performance — top speed, acceleration and automatic speed reduction — to suit the application.
- **Regenerative braking**, energy back to the battery.
- The **spring loaded, anti-slip, foldable platform** enables the driver to work in tight situations and to ride over long distances for maximum comfort and efficiency.
- The truck is equipped with a modified **POWERTRAK** drive unit configuration. The drive unit automatically and constantly adjusts the drive wheel pressure to match the weight of the load. The result is excellent stability, unrivalled traction and an overall improvement in speed and work rate.
- Exceptional **battery power** with capacities available up to 300Ah. Battery compartment increases in height instead of thickness — effects neither the compactness nor the turning radius.
- Easy upwards and sideways **battery exchange** for continuous operation shift after shift. (Sideways exchange only for 240Ah).



email: info@forstor.com.ua

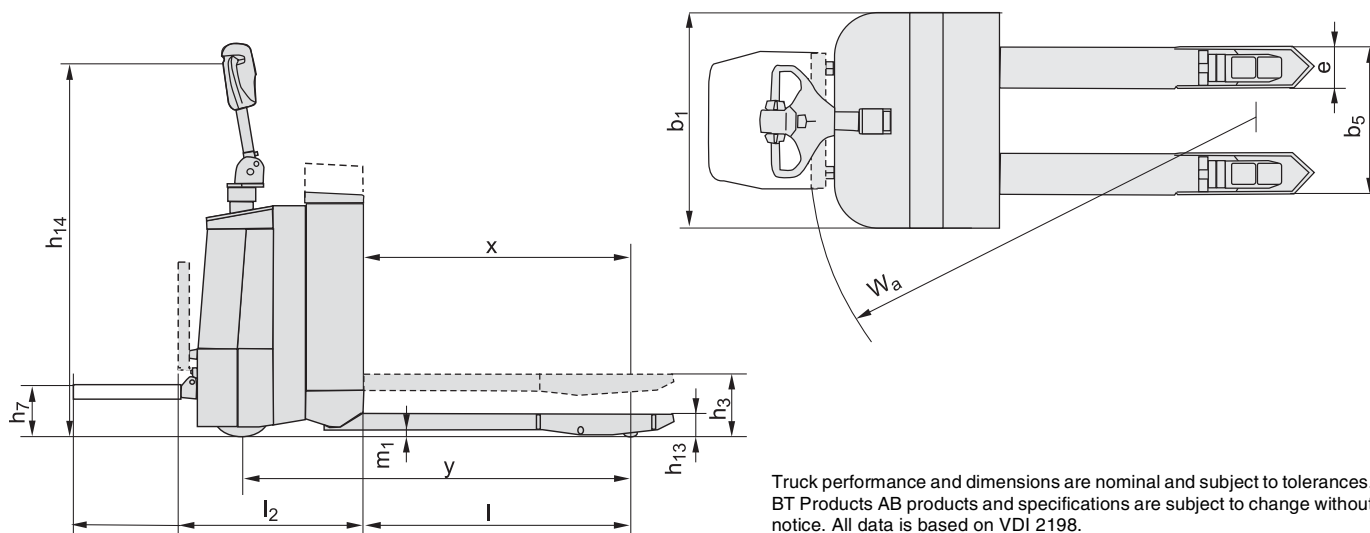
site: www.forstor.com.ua



Technical Details		LPE200I
Power unit		electrical, battery
Rated capacity	kg	2000
Load centre	mm	600
Weight without battery	kg	555
Max. axle pressure drive wheel, without/with rated load	kg	370/570
Max. axle pressure castor wheels, without/with rated load	kg	135+135/240+240
Max. axle pressure fork wheels, single, without/with rated load	kg	80+80/875+875
Castor wheels, Vulkollan	mm	Ø 125x40
Fork wheels, single/bogie, Vulkollan	mm	Ø 85x95/Ø 85x75
Drive wheel, Vulkollan, 75 shore	mm	Ø 215x70
Travel speed, without/with rated load	km/h	6.0/6.0
Lift speed fork, without/with rated load	m/s	0.07/0.05
Lowering speed fork, without/with rated load	m/s	0.07/0.08
Gradient, without/with rated load	%	18/8
Service-/parking brake		electrical
Drive motor/Intermittent rating	kW/%	1.7/60
Lift motor/Intermittent rating	kW/%	2.2/5
Battery capacity, (5h discharge), min.—max.	V/Ah	24/240—24/300
Battery weight, min.—max.	kg	175—275
Steering system		steering arm
Speed control, number of steps		stepless
Steering arc	°	180

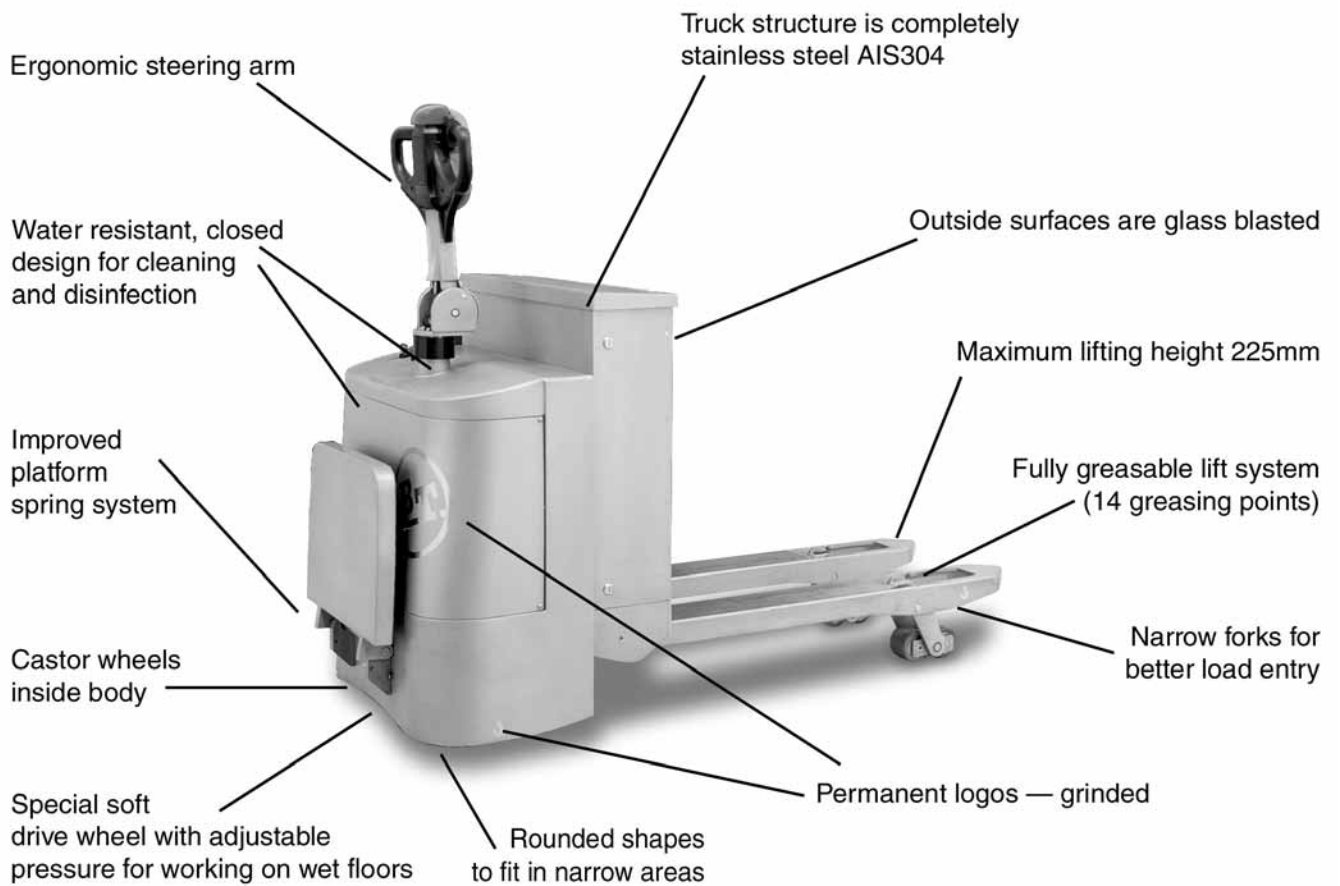
Dimensions, mm		LPE200I
x	Back of fork to bogie wheel centre, fork raised/lowered	877/947
y	Wheel base, fork raised/lowered	1328/1398
h ₃	Lift height	225
h ₇	Platform height	180
h ₁₄	Height of handle in neutral pos.	1400
h ₁₃	Height of lowered fork	85
l ₂	Truck length incl. back of fork, platform up/down	693/1073
b ₁	Chassis, width	790
e	Fork width	150
l	Fork length, in 50 mm steps	1000—1400
b ₅	Width across fork	490/540/655
m ₁	Floor clearance	39
A _{st}	Aisle width, min., platform up/down (Pallet 800x1200 mm)	2114/2484
W _a	Turning radius, platform up/down	1661/2031

Data is based on standard battery compartment, medium size, l=1150mm



Truck performance and dimensions are nominal and subject to tolerances. BT Products AB products and specifications are subject to change without notice. All data is based on VDI 2198.

Why BT stainless steel trucks?





Options

- Battery change table (carbon steel)
- Change plugs for spare battery
- Gearbox oil and hydraulic oil with USDA H1-certificate.
- Climber wheels (only for single fork wheels) allow better pallet entry



email: info@forstor.com.ua
site: www.forstor.com.ua



Handling innovation